

PREE Laboratories - South
545 SW 2nd St, #202, Corvallis, OR 97333
541-257-5002 / OLCC 010-10087092BDA / www.PREElab.com

Buttermilk Biscuits
Legacy Grower's Guild LLC
(Info Only)

Confident Cannabis ID:

Sample ID: C250203-13

Matrix: Useable Marijuana

METRC Batch #:

Sampling Method/SOP: FSOP #101

Date Sampled: NA

Date Accepted: 02/10/25

Harvest/Process Lot ID:

Batch ID:

Batch Size (g):

Unit for Sale:

Harvest/Production Date:

Cannabinoid Analysis

FOR INFORMATIONAL USE ONLY - NOT FOR REGULATORY PURPOSES

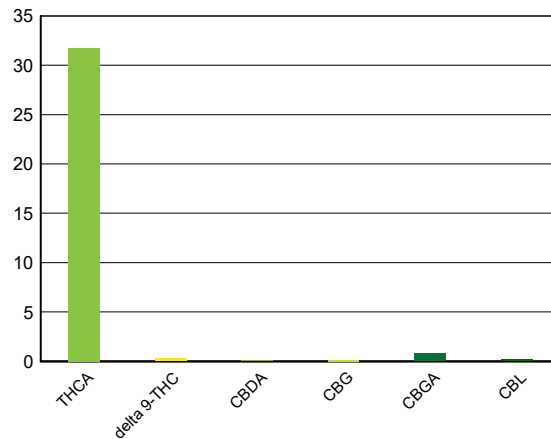
Date/Time Extracted: 02/13/25 15:28

Analysis Method/SOP: LSOP #303

Date/Time Analyzed: 02/14/25 21:08

Cannabinoids	LOQ(%)	mg/g	% weight	Cannabinoid Profile
Total THC ((THCA*0.877)+Δ9THC)		281.60	28.160	
Total CBD ((CBDA*0.877)+CBD)		< LOQ	< LOQ	

THCA	0.15000	317.72	31.772
delta 9-THC	0.15000	2.96	0.29641
delta 8-THC	0.15000	< LOQ	< LOQ
THCV	0.15000	< LOQ	< LOQ
CBGA	0.15000	7.84	0.78424
CBDA	0.15000	< LOQ	< LOQ
CBD	0.15000	< LOQ	< LOQ
CBDV	0.15000	< LOQ	< LOQ
CBN	0.15000	< LOQ	< LOQ
CBG	0.15000	< LOQ	< LOQ
CBC	0.15000	< LOQ	< LOQ
CBDV-A	0.15000	< LOQ	< LOQ
CBL	0.15000	1.89	0.18886
Sum of tested Cannabinoids	0.15000	330.41	33.041



Moisture Content

Date/Time Analyzed: 02/14/25 11:17
Analysis Method/SOP: LSOP #301

Moisture: 7.800 %

"Total THC" and "Total CBD" are calculated values and are an Oregon reporting requirement (OAR 333-064-0100). For Cannabinoid analysis, only delta 9-THC, delta 8-THC, THCA, CBD and CBDA are ORELAP accredited analytes. Cannabinoid values reported for plant matter are dry weight corrected; Oregon Water Activity action level is 0.65Aw and Oregon Moisture Content action level is 15%. Samples above limit will be highlighted RED; FD = Field Duplicate; LOQ = Limit of Quantitation.

Carson Newkirk

Carson Newkirk
Laboratory Manager - 2/16/2025

Page 1 of 2

PREE Laboratories - South
545 SW 2nd St, #202, Corvallis, OR 97333
541-257-5002 / OLCC 010-10087092BDA / www.PREElab.com

Quality Control

Batch: C25B097 - LSOP #303 Cannabinoid Quantification

Blank(C25B097-BLK1)			Extracted: 02/13/25 15:28			Analyzed: 02/14/25 19:34			
Analyte	Result	LOQ	Recovery Limits	Notes	Analyte	Result	LOQ	Recovery Limits	Notes
CBDV-A	< LOQ	0.15000 (%)	< LOQ		CBDV	< LOQ	0.15000 (%)	< LOQ	
CBDA	< LOQ	0.15000 (%)	< LOQ		CBGA	< LOQ	0.15000 (%)	< LOQ	
CBG	< LOQ	0.15000 (%)	< LOQ		CBD	< LOQ	0.15000 (%)	< LOQ	
THCV	< LOQ	0.15000 (%)	< LOQ		CBN	< LOQ	0.15000 (%)	< LOQ	
delta 8-THC	< LOQ	0.15000 (%)	< LOQ		delta 9-THC	< LOQ	0.15000 (%)	< LOQ	
CBL	< LOQ	0.15000 (%)	< LOQ		CBC	< LOQ	0.15000 (%)	< LOQ	
THCA	< LOQ	0.15000 (%)	< LOQ		Sum of tested Cannabinoids	< LOQ	0.15000 (%)	< LOQ	

LCS(C25B097-BS1)			Extracted: 02/13/25 15:28			Analyzed: 02/14/25 19:50			
Analyte	% Recovery	LOQ	Recovery Limits	Notes	Analyte	% Recovery	LOQ	Recovery Limits	Notes
CBDA	107	0.15000 (%)	90-110		CBD	106	0.15000 (%)	90-110	
delta 8-THC	106	0.15000 (%)	90-110		delta 9-THC	107	0.15000 (%)	90-110	
THCA	107	0.15000 (%)	90-110						



Carson Newkirk
Laboratory Manager - 2/16/2025

Page 2 of 2