

PREE Laboratories - South
545 SW 2nd St, #202, Corvallis, OR 97333
541-257-5002 / OLCC 010-10087092BDA / www.PREElab.com

Velvet Pie
Legacy Grower's Guild LLC
(Info Only)

Confident Cannabis ID:
Sample ID: C242012-20
Matrix: Hemp
METRC Batch #:
Sampling Method/SOP: FSOP #101
Date Sampled: 12/3/2024 9:00:00AM
Date Accepted: 12/03/24
Harvest/Process Lot ID:

Batch ID:
Batch Size (g):
Unit for Sale:
Harvest/Production Date:

Cannabinoid Analysis

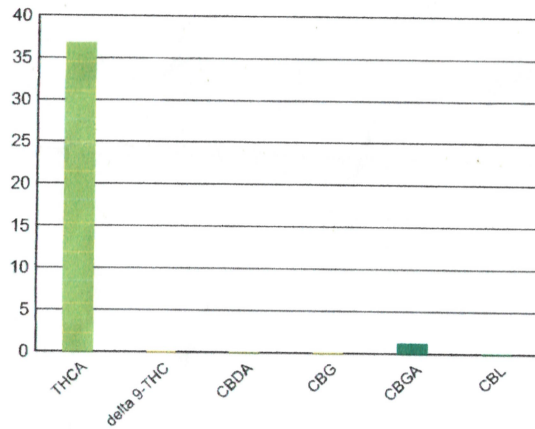
FOR INFORMATIONAL USE ONLY - NOT FOR REGULATORY PURPOSES

Date/Time Extracted: 12/03/24 14:21
Date/Time Analyzed: 12/03/24 23:34

Analysis Method/SOP: LSOP #303

Cannabinoids	LOQ(%)	mg/g	% weight
Total THC ((THCA*0.877)-Δ9THC)		322.41	32.241
Total CBD ((CBDA*0.877)+CBD)		< LOQ	< LOQ
THCA	0.15000	367.62	36.762
delta 9-THC	0.050000	0.99	0.098563
delta 8-THC	0.15000	< LOQ	< LOQ
THCV	0.15000	< LOQ	< LOQ
CBGA	0.15000	13.27	1.3273
CBDA	0.15000	< LOQ	< LOQ
CBD	0.15000	< LOQ	< LOQ
CBDV	0.15000	< LOQ	< LOQ
CBN	0.15000	< LOQ	< LOQ
CBG	0.15000	< LOQ	< LOQ
CBC	0.15000	< LOQ	< LOQ
CBDV-A	0.15000	< LOQ	< LOQ
CBL	0.15000	< LOQ	< LOQ
Sum of tested Cannabinoids	0.15000	380.90	38.090

Cannabinoid Profile



Moisture Content

Date/Time Analyzed: 12/03/24 04:20
Analysis Method/SOP: LSOP #301

Moisture: 8.110 %

Total THC and *Total CBD* are calculated values and are an Oregon reporting requirement (OAR 333-064-0100). For Cannabinoid analysis, only delta 9-THC, delta 8-THC, THCA, CBD and CBDA are ORELAP accredited analytes. Cannabinoid values reported for plant matter are dry weight corrected; Oregon Water Activity action level is 0.65Aw and Oregon Moisture Content action level is 15%. Samples above limit will be highlighted RED; FD = Field Duplicate; LOQ = Limit of Quantitation.

Carson Newkirk
Carson Newkirk
Laboratory Manager - 12/5/2024


PREE Laboratories - South
545 SW 2nd St, #202, Corvallis, OR 97333
541-257-5002 / OLCC 010-10087092BDA / www.PREELab.com

Quality Control

Batch: C24L029 - LSOP #303 Cannabinoid Quantification

Blank(C24L029-BLK1)			Extracted: 12/03/24 14:21			Analyzed: 12/03/24 18:06			
Analyte	Result	LOQ	Recovery Limits	Notes	Analyte	Result	LOQ	Recovery Limits	Notes
CBDV-A	< LOQ	0.15000 (%)	< LOQ		CBDV	< LOQ	0.15000 (%)	< LOQ	
CBDA	< LOQ	0.15000 (%)	< LOQ		CBGA	< LOQ	0.15000 (%)	< LOQ	
CBG	< LOQ	0.15000 (%)	< LOQ		CBD	< LOQ	0.15000 (%)	< LOQ	
THCV	< LOQ	0.15000 (%)	< LOQ		CBN	< LOQ	0.15000 (%)	< LOQ	
delta 8-THC	< LOQ	0.15000 (%)	< LOQ		delta 9-THC	< LOQ	0.050000 (%)	< LOQ	
CBL	< LOQ	0.15000 (%)	< LOQ		CBC	< LOQ	0.15000 (%)	< LOQ	
THCA	< LOQ	0.15000 (%)	< LOQ		Sum of tested Cannabinoids	< LOQ	0.15000 (%)	< LOQ	

LCS(C24L029-BS1)			Extracted: 12/03/24 14:21			Analyzed: 12/03/24 18:22			
Analyte	% Recovery	LOQ	Recovery Limits	Notes	Analyte	% Recovery	LOQ	Recovery Limits	Notes
CBDA	101	0.15000 (%)	90-110		CBD	102	0.15000 (%)	90-110	
delta 8-THC	100	0.15000 (%)	90-110		delta 9-THC	101	0.050000 (%)	90-110	
THCA	101	0.15000 (%)	90-110						

 Carson Newkirk
Laboratory Manager - 12/5/2024