



## FC Distribution

Sample 623-042723-013

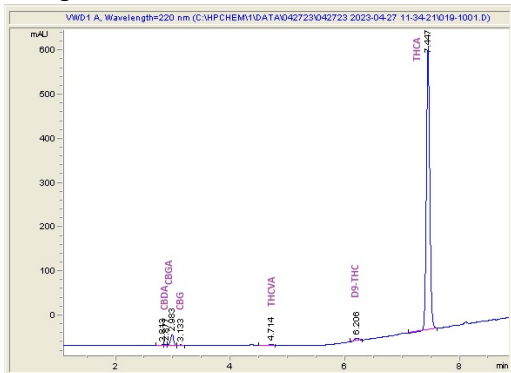
Insane Clown Kush (THCA Hemp)

Sample Submitted: 04-27-2023; Report Date: 04-28-2023

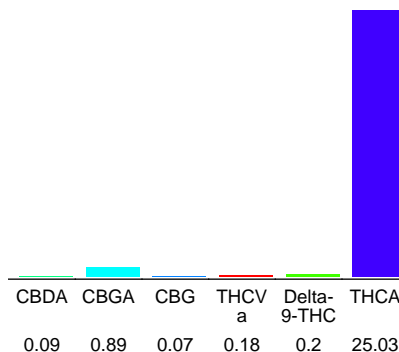
## Insane Clown Kush (THCA Hemp)

Plant Material: Flower

### Chromatogram



### Cannabinoid Profile



### Cannabinoid Profile by HPLC

**0.20%**  
Delta-9-THC

**0.00%**  
CBD

**26.46%**  
Total Cannabinoids

Cannabinoid	% wt	mg/g
CBDA	0.09	0.9
CBGA	0.89	8.9
CBG	0.07	0.7
THCVa	0.18	1.8
Delta-9-THC	0.2	2.0
THCA	25.03	250.3
<b>Total Cannabinoids</b>	<b>26.46</b>	<b>264.6</b>
<b>Calculated Total THC</b>	<b>22.15</b>	<b>221.51</b>
<b>Calculated CBD Yield</b>	<b>0.08</b>	<b>0.79</b>

Calculated Total THC = Delta-9-THC + 0.877 \* THCA  
Calculated Maximum CBD Yield = CBD + 0.877 \* CBDA

### Marin Analytics, LLC

250 Bel Marin Keys Blvd, Suite D4  
Novato, CA 94949

415-936-6477 / sarabiancalana1@gmail.com

**Sara Biancalana**  
Chief Scientist

This sample has been tested by Marin Analytics, LLC using valid testing methodologies and a quality system. Values reported relate only to the sample tested. Marin Analytics, LLC makes no claims as to the efficacy, safety or other risks associated with any detected or non-detected levels of any compounds reported herein. This Certificate shall not be reproduced except in full, without the written approval of Marin Analytics, LLC. Copyright 2022 Marin Analytics, LLC All Rights Reserved.